

Release Notes
PAWS Developer's Studio
Version 01.35.01
02 March 2007

1.1 Critical Items

1.2 Known Limitations

1.3 Enhancements

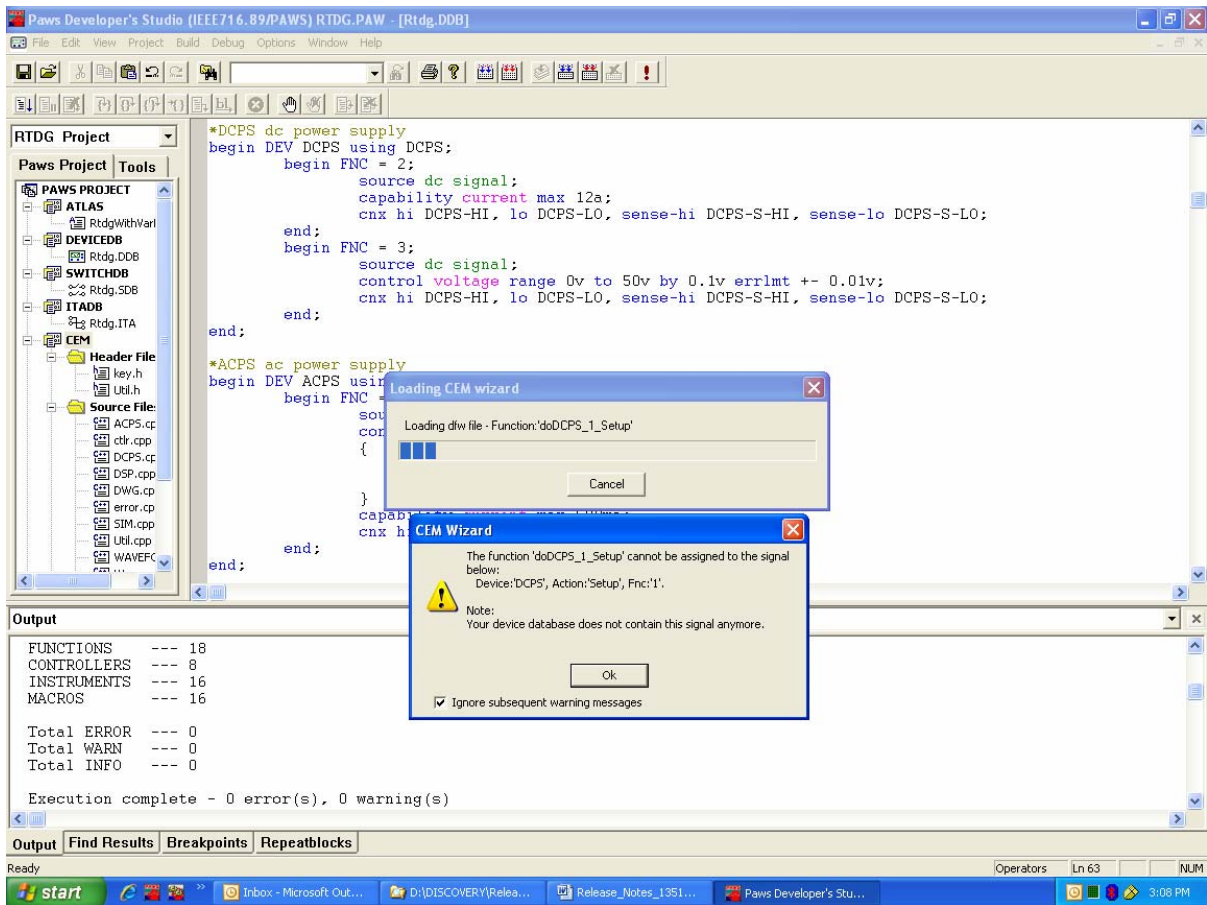
1.3.1 CEM Wizard

A user may encounter warning messages while loading a CEM Wizard database using the menu option “**View**”→ “**CEM Wizard**” or the right click menu item on the “**CEM**” node in the Project Tree.

Generally these warning messages could occur under the following conditions:

- Code has been generated for a device that does not support the device function anymore, due to change in the device capabilities.
- Code has been generated for a device function that does not support the function parameter(s) anymore, due to change in the device function capabilities.

Users may choose to select the checkbox “**Ignore subsequent warning messages**” which brings up the CEM Wizard dialog without displaying any further warning messages. This is useful for quickly loading old CEM Wizard files where significant changes have occurred in the “.ddb” device database file or “.dev” device database binary file.



1.4 Problem Reports

1.4.1 PR 07007 Accelerator key Ctrl+B available for Edit\Beautify

The Edit\Beautify pull down menu has Ctrl+B as shortcut.