

TYX CORPORATION

Productivity Enhancement Systems



PAWS Studio Release Notes

Version 1.36.2
August 22, 2008

Table of contents

1	Paws Developer's Studio	3
1.1	Critical Items	3
1.2	Known Limitations	3
1.3	Enhancements	3
1.3.1	Building support for CEM Modules using latest Microsoft compilers	3
1.4	Problem Reports	4
2	Run Time System	5
2.1	Critical Items	5
2.2	Known Limitations	5
2.3	Enhancements	5
2.3.1	TDG Viewer Label Enhancement	5
2.4	Problem Reports	6
2.4.1	PR 08047	6

1 Paws Developer's Studio



Version 1.36.2

Release date: August 22, 2008

1.1 Critical Items

1.2 Known Limitations

1.3 Enhancements

1.3.1 Building support for CEM Modules using latest Microsoft compilers

Paws Developer Studio provides support for building CEM Modules using the latest Microsoft compilers. For automatically setting the compiler version to be used for building a CEM Module, user may follow the following steps:

1. In Paws Studio, Select the “**Options**”→”**CEM**” menu item.
2. Click on button to select “**Batch File that Sets the Compiler\Linker Environment Variables**”. [Alternately user may directly provide the full path to “**vcvars32.bat**” a Microsoft provided batch file that sets the environment for build].

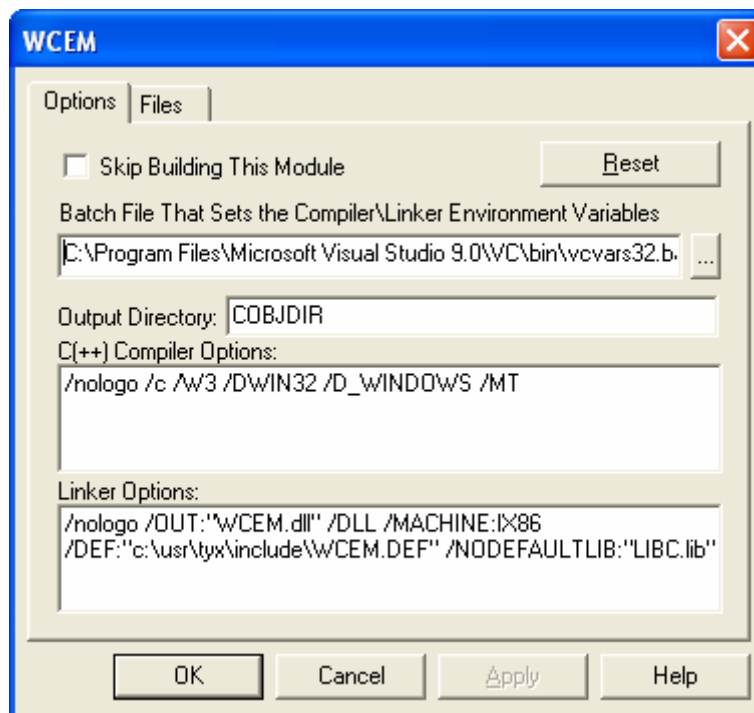


Figure 1

3. Paws Studio will automatically list the installed (known) Microsoft Compilers and the location of the batch file as shown in “Figure 2”.

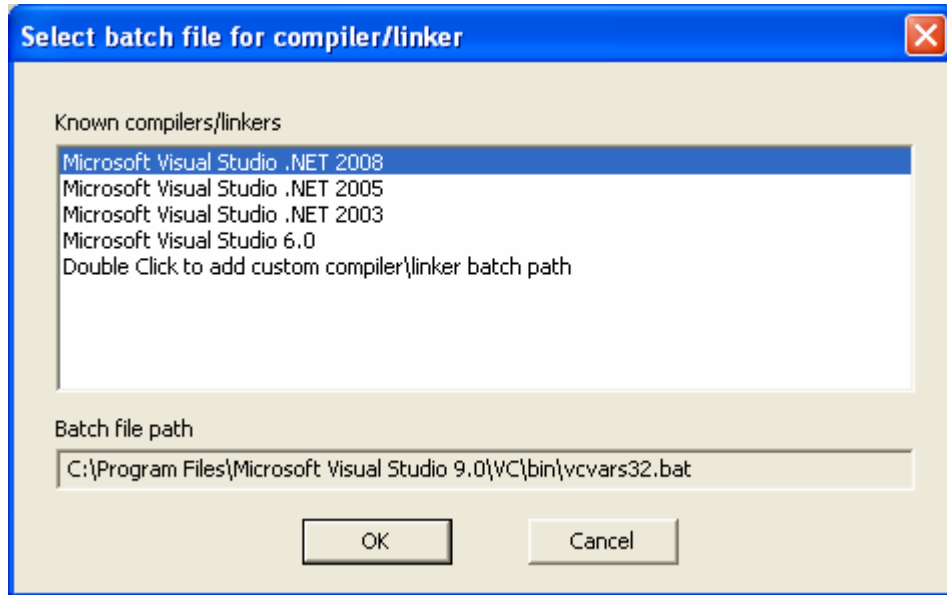


Figure 2

4. Users may browse through the list to select the compiler of their choice and click OK.

Note:

Paws Developer Studio also provides support for “Microsoft Visual C++ Express Edition compilers 2005 & 2008”. Users may choose to use these free compilers for CEM builds.

Microsoft Visual Studio .NET 2005 and greater versions do not support the “MT” compiler option. Users may thus expect to see linking errors related to “LIBC.lib”. Users switching to these compiler versions from Microsoft Visual Studio .NET 2003 or lower would need to “**RESET**” their compiler/linker options by selecting the “**Reset**” button in Figure 1 above, before performing CEM builds.

1.4 Problem Reports

2 Run Time System



Version 1.36.2

Release date: August 22, 2008

2.1 Critical Items

2.2 Known Limitations

2.3 Enhancements

2.3.1 TDG Viewer Label Enhancement

TDG Viewer provides capability to rename/reconfigure the label names seen in the Test Diagram. Figure 3 shows the new names provided for ACPS, DCPS, UUT BMP pins etc ...

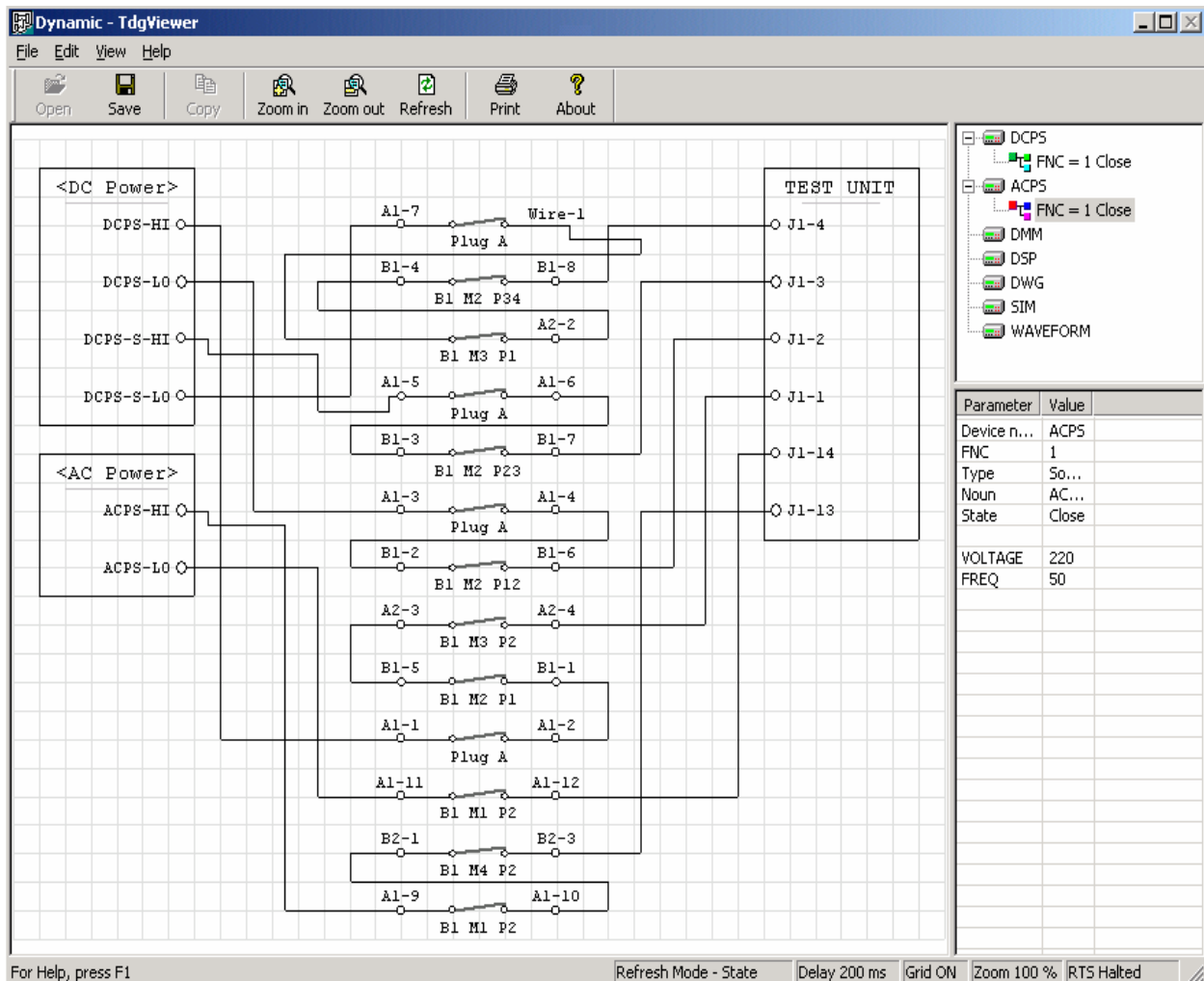


Figure 3

To do so an XML configuration file named “**TdgLabels.xml**” needs to present in the `<usr>\tyx\sub\CURRENT_SUBSET\CURRENT_STATION\station` folder of PAWS installation. The contents of the XML file may be as follows

```
<Labels>
  <Label name="B1 M1 P1" value="Plug A" />
  <Label name="UUT" value="TEST UNIT" />
  <Label name="J1-C" value="J1.C" />
  <Label name="DMM" value="AG111" />
  <Label name="DMM-HI" value="HI Plug" />
  <Label name="DMM-LO" value="LO Plug" />
  <Label name="ACPS" value="&lt;AC Power&gt;" />
  <Label name="DCPS" value="&lt;DC Power&gt;" />
</Labels>
```

Note:

Due to display space restraints the new name should be limited to 12 characters in length.

2.4 Problem Reports

2.4.1 PR 08047

This problem report has been fixed to provide backward compatibility.