

TYX CORPORATION

Productivity Enhancement Systems



PAWS Studio Release Notes

Version 1.36.3
October 9, 2008

Table of contents

1	Paws Developer's Studio	3
1.1	Critical Items	3
1.2	Known Limitations	3
1.3	Enhancements	3
1.4	Problem Reports	3
2	Run Time System	4
2.1	Critical Items	4
2.2	Known Limitations	4
2.3	Enhancements	4
2.3.1	TDG Viewer Plug Pins	4
2.4	Problem Reports	5
2.4.1	PR 08044 TDG Viewer enhancements request	5
2.4.2	PR 08063: COM CEM failed to be loaded in ComCem.exe process	5
2.4.3	PR 08070: connection variables assignment failed	5

1 Paws Developer's Studio



Version 1.36.3

Release date: October 9, 2008

1.1 Critical Items

1.2 Known Limitations

1.3 Enhancements

1.4 Problem Reports

2 Run Time System



Version 1.36.3

Release date: October 9, 2008

2.1 Critical Items

2.2 Known Limitations

2.3 Enhancements

2.3.1 TDG Viewer Plug Pins

TDG Viewer provides capability to show the plug pins in TDG Viewer. They are defined as the pins in the instruments slot of the panel that connects the UUT adapter to the ATE station. The following sample shows how the J20-27 plug pin becomes visible in the TDG Viewer.

ATLAS code:

```
000001 BEGIN, ATLAS PROGRAM 'A'                                $
E100000 MEASURE, (RES INTO 'MEASUREMENT'), IMPEDANCE,
      RES RANGE 0.01 KOHM TO 100 KOHM ,
      CNX HI J1.A                                              $
999999 TERMINATE, ATLAS PROGRAM 'A'                          $
```

DeviceDB code:

```
*DMM digital multimeter
begin DEV DMM;
  cnx hi DMM-HI;
  begin FNC = 1 using DMM;
    sensor (res) impedance;
    control res range 0.01 kohm to 100 kohm;
  end;
end;
```

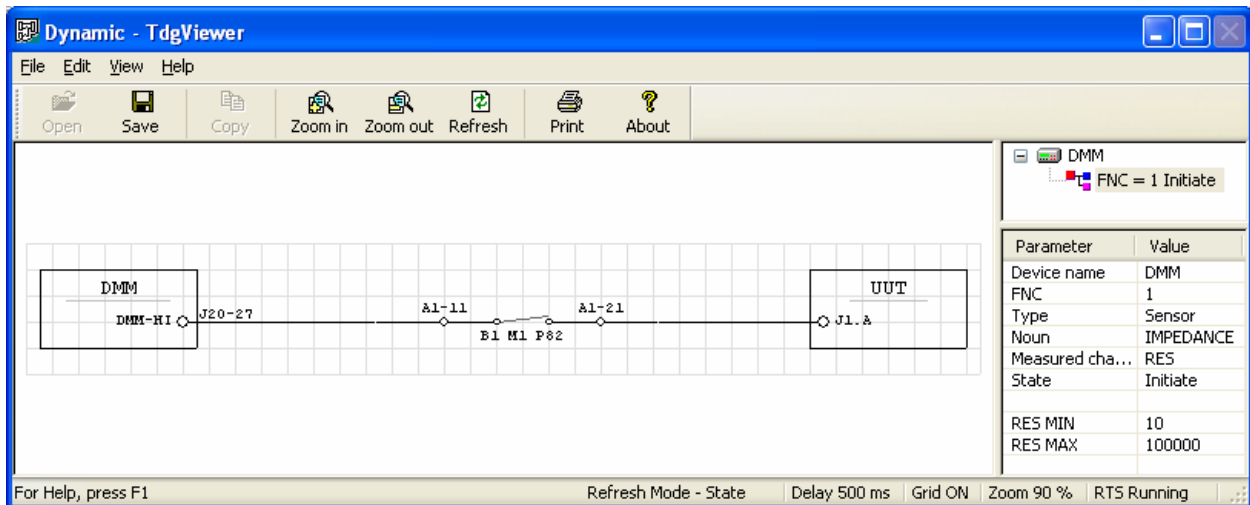
SwitchDB code:

```
begin BLK = 1;
  begin MOD = 1 50 : A1;* switching pins
    11 to 21 via switch 323 PTH = 82;
  end;

  begin MOD = 5 100 : J20;* plug pins
    DMM-HI to 27;
  end;
end;
```

ITADB code:

```
from J20-27 to A1-11;
from A1-21 to J1.A;
```



2.4 Problem Reports

2.4.1 PR 08044 TDG Viewer enhancements request

This problem report has as subject the TDG Viewer enhancement that has been described in paragraph 2.3.1 of this document, and paragraph 2.3.1 of the Release Notes 1.36.2 released on Aug 22 2008.

2.4.2 PR 08063: COM CEM failed to be loaded in ComCem.exe process

This problem had been generated by a faulty <usr>\tyx\concem\comcem.dll, versions 1.36.1 and 1.36.2. This prevented the usage of a CEM whose bus description looked like:

```
"CEM Lib" 1 HOST local LIB E:\usr_1_36_0Beta2\paws\COMCEMTest\WCEM.dll
DMM BUS 1
```

2.4.3 PR 08070: connection variables assignment failed

This problem report made the FILL or CALCULATE statements on connection variables fail with the following run time warning:

```
WRN: WARNING: (v1c=012313) Incompatible data assignment
```

As a result of this warning, these connection variables remained not initialized. A later use of them might generate the following warning:

```
WRN: WARNING: (v1c=013342) Array index out of range
```