

TYX CORPORATION

---

Productivity Enhancement Systems



# PAWS Studio Release Notes

Version 1.38.0  
May 20, 2010

# Table of contents

<b>1</b>	<b>Paws Developer's Studio</b>	<b>3</b>
1.1	Critical Items	3
1.2	Known Limitations	3
1.3	Enhancements	3
1.3.1	Paws Studio Look & Feel update	3
1.3.2	TD Explorer, Runtime TDG Viewer and Paws Info applications Look & Feel update	7
1.3.3	New Configure Registry application	9
1.4	Problem Reports	9
<b>2</b>	<b>Run Time System</b>	<b>10</b>
2.1	Critical Items	10
2.2	Known Limitations	10
2.3	Enhancements	10
2.3.1	WRTS Look & Feel update	10
2.4	Problem Reports	12
2.4.1	PR 10026 MAX-TIME control from CEM fails	12
<b>3</b>	<b>PAWS1641 station</b>	<b>13</b>
3.1	Enhancements	13
3.1.1	1641BSCConfig.XML file changed	13
3.1.2	PHYSICAL-NOMINAL and DECIMAL-NOMINAL are declared as new modifiers	13

# 1 Paws Developer's Studio



Version 1.38.0

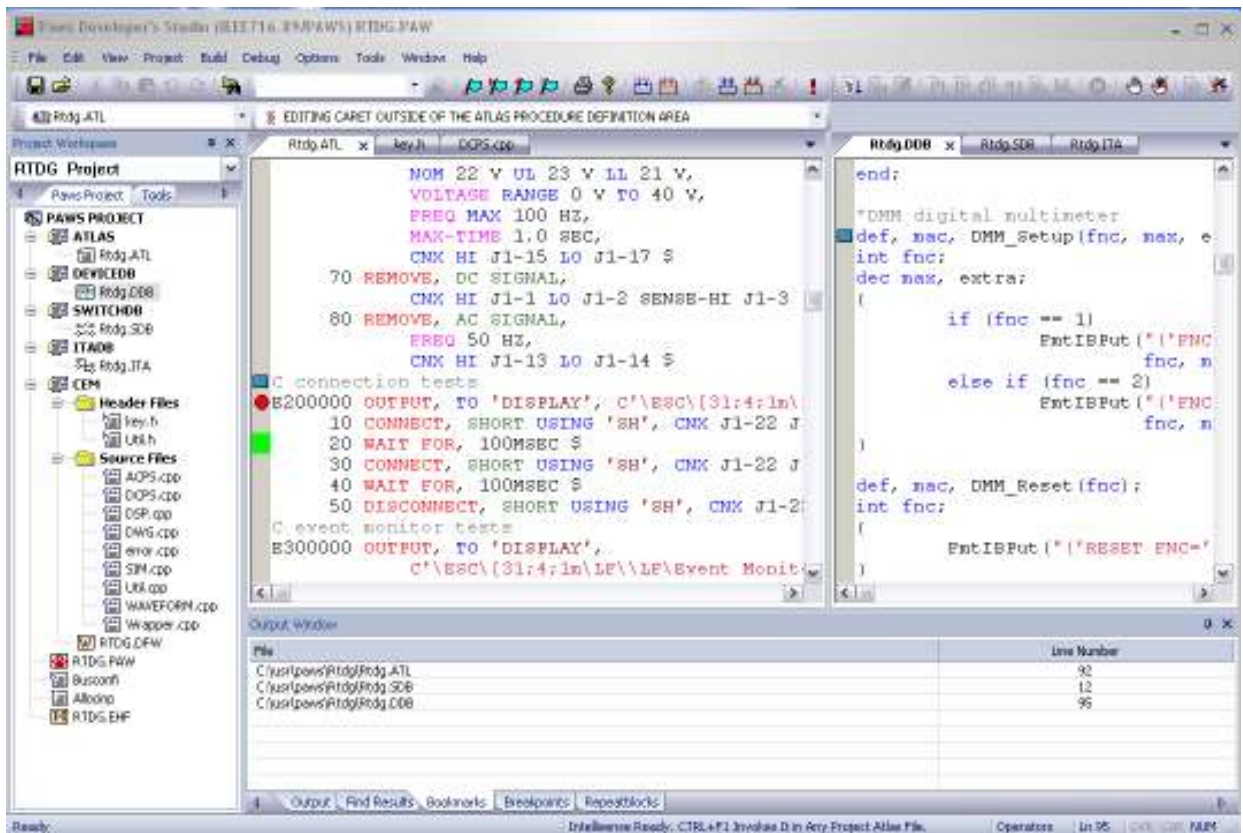
Release date: May 20, 2010

## 1.1 Critical Items

## 1.2 Known Limitations

## 1.3 Enhancements

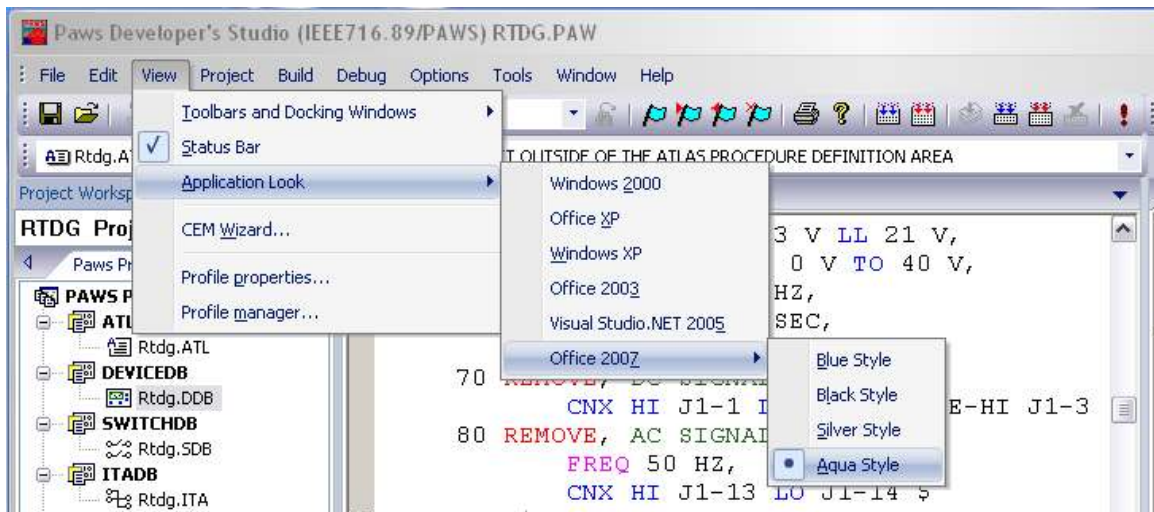
### 1.3.1 Paws Studio Look & Feel update



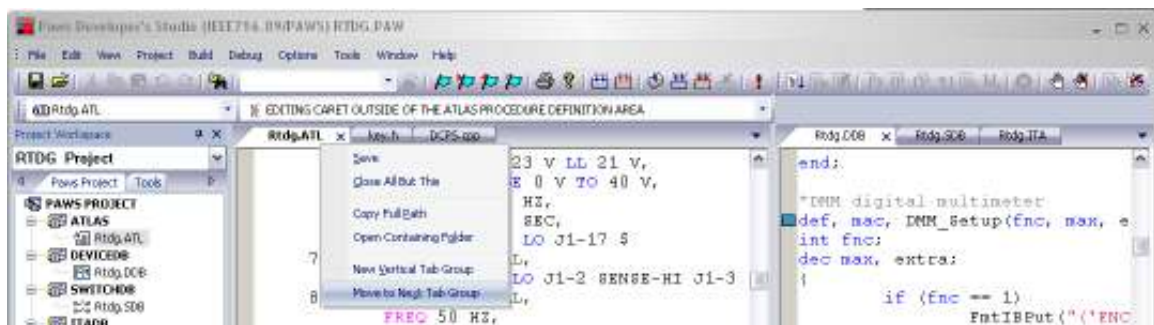
Paws Studio application has been enhanced to support many new features. Key updates include –

- Configurable application look, using Menu option **View**→**Application Look**

User can select various Application Looks like Windows 2000, Office XP, Windows XP, Office 2003, Visual Studio .NET 2005 or Office 2007. Similar update is also available through the entire suite of Studio applications like WRTS, TD Explored, Runtime TDG Viewer and Paws Info.



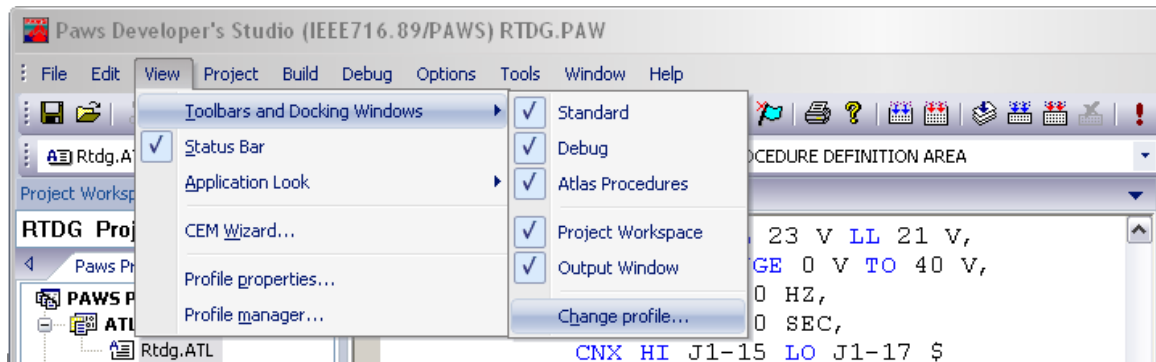
- Tabbed view for files with self close button, providing quick view of open files and easy switching between files.



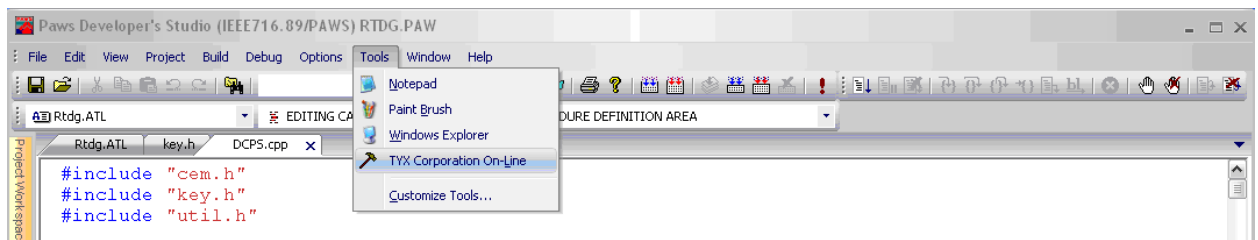
- Each tab provides a new right click menu tab with features...
  - “Save” – saves the current file.
  - “Close All But This” – closes all other open tabs but this one.
  - “Copy Full Path” – copies the current file’s full path name in the clipboard.
  - “Open Containing Folder” – opens an explorer window and navigates to the folder where the current file exists.
  - “New Horizontal Tab Group” – splits the editor area to create a new horizontal tab group and moves the file to this group.
  - “New Vertical Tab Group” – splits the editor area to create a new vertical tab group and moves the file to this group.
  - “Move To Next Tab Group” – moves the current file to the next tab group in top/down left/right order.
  - “Move To Previous Tab Group” – moves the current file to the previous tab group in top/down left/right order.

Additionally it allows for...

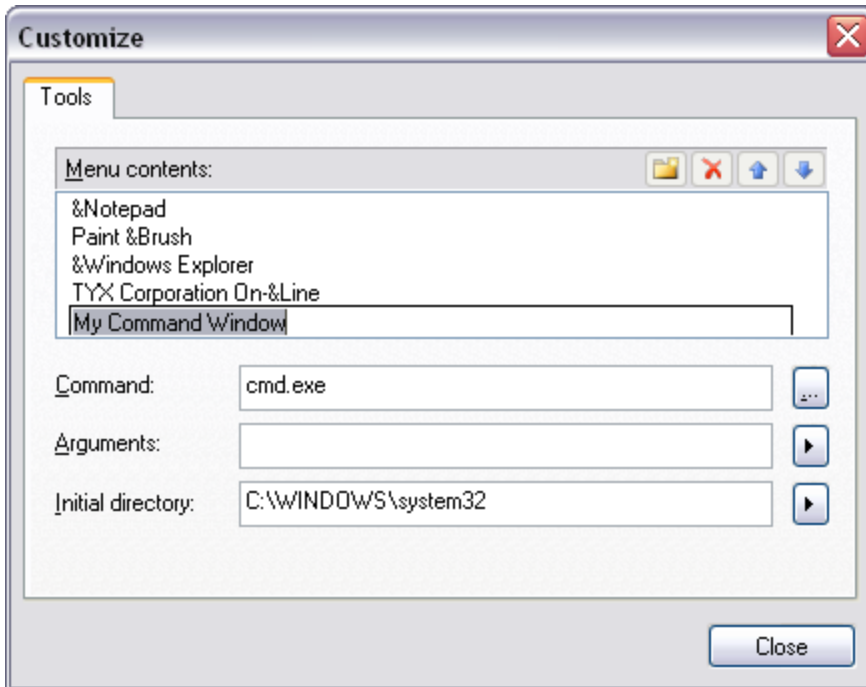
- Drag/Drop files within tab groups.
- Easy switching between hidden tabs via tab drop down menu button.
- A new convenient way of docking windows (Project area, Information and Output area) is provided with Floating capability and Auto-hide/Hide capability, providing increased editor area.
- New Menu option **View→Toolbars and Docking Windows**, to allow for user customization of windows. Within this option users can also choose “**Change Profile**” which launches the TYX Customizer. For added convenience, “**Profile Properties**” and “**Profile Manager**” have been moved under the View menu. A similar change exists for the WRTS.



- New **Bookmark** feature capability under the Edit menu option. Features include “**Toggle Bookmark**”, “**Next Bookmark**”, “**Previous Bookmark**” and “**Delete All Bookmarks**”. Additionally, there is also a new Bookmarks Tab in the Miscellaneous Windows area, which consolidates all the Bookmarks for the project. Like Breakpoints and Repeat Blocks of the project, Bookmarks are serialized to the project OPT file.
- **Enhanced ATLAS Procedure Bar** with distinguishing icons for ATLAS files or AS Modules as well as for GLOBAL, EXTERNAL and LOCAL Procedures within these items.
- New “**Tools**” Menu option with capability for users to customize new tools. Default customization to launch frequently used tools like Notepad, Explorer etc. are provided.



The initial configuration provides for launching commonly usable tools like Notepad, Paint Brush, Windows Explorer and TYX Corporation website. However, user may choose to add his own set of tools via the “Customize Tools...” dialog.

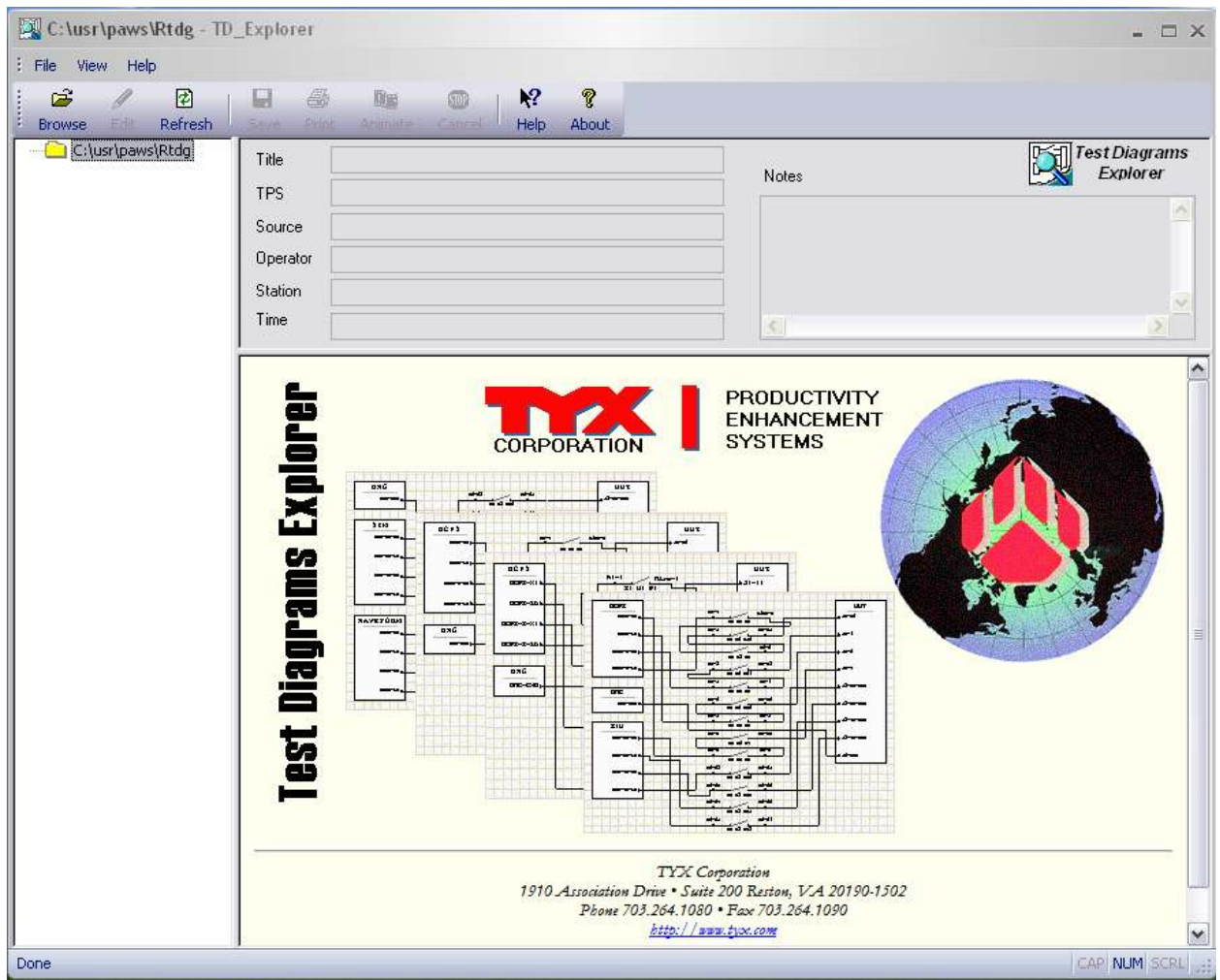


- Personalized user settings (per Windows OS user on same computer) for configuration of Paws window layout, recently opened projects/files etc.

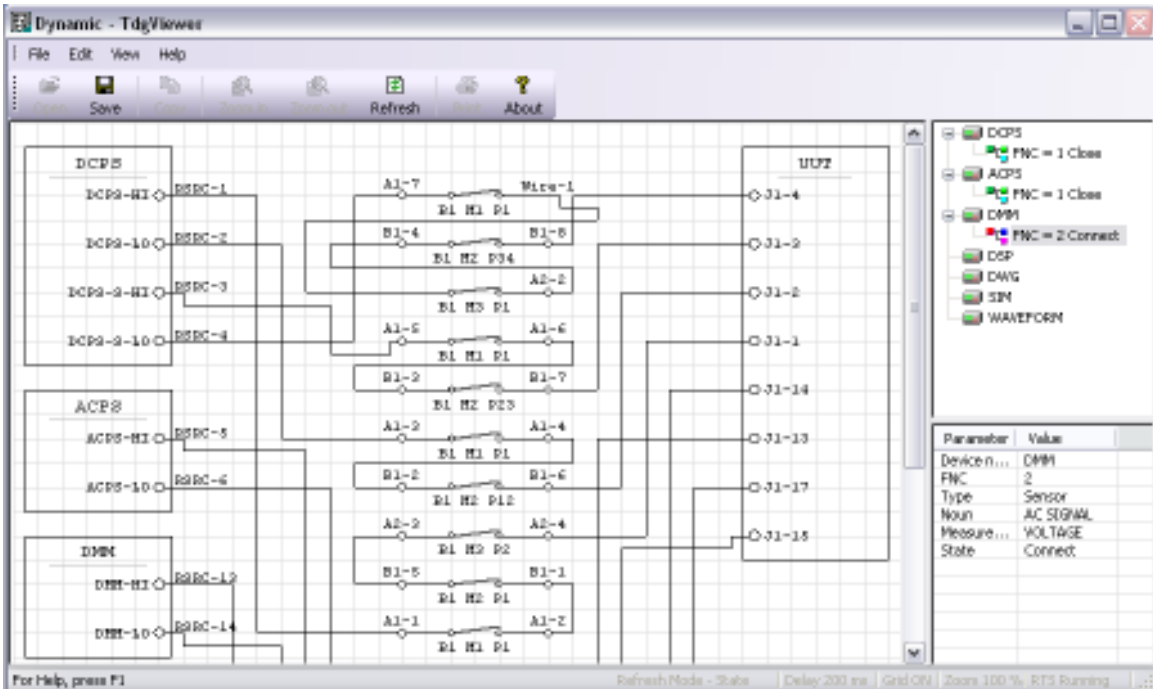
**Note:**

On initial launch of the new PAWS application, user's configuration settings from the "Paws.ini" file will be copied over to the windows registry. Thereafter, the PAWS Studio application will not use "Paws.ini" file for user settings, it will use the Windows Registry instead. Alternately, users can also work with "Configure Registry" is also a new application provided to the user to assist in transferring configuration settings. See more details under "New Configure Registry application"

- 1.3.2 TD Explorer, Runtime TDG Viewer and Paws Info applications Look & Feel update  
The configurable application look, using Menu option **View**→**Application Look** has also been provided for the TD Explorer, Runtime TDG Viewer and Paws Info applications.







The screenshot shows the PawsInfo application displaying a file explorer view of the 'tyx' directory. The files and folders are listed in a table format.

Name	Version ...	Size	Modified Time	Created Time	Path
bin					
1641.CLC.exe	1.37.17.3	750592	12/22/09 15:14:18	12/22/09 16:19:35	c:\usr\tyx\bin\1641.CLC.exe
1641.CLCEx.exe	1.37.17.3	957952	12/22/09 15:16:24	12/22/09 16:19:35	c:\usr\tyx\bin\1641.CLCEx.exe
andf_runtime.dll	2.7.5.2	99328	01/28/05 11:40:22	12/10/09 14:56:55	c:\usr\tyx\bin\andf_runtime.dll
ATLASPreprocessor.exe	1.37.17.3	249344	12/22/09 15:14:52	12/10/09 14:56:55	c:\usr\tyx\bin\ATLASPreprocessor.exe
ATLASPreprocessor.exe	1.37.17.3	261472	12/22/09 15:14:42	12/22/09 16:19:36	c:\usr\tyx\bin\ATLASPreprocessor.exe
atdfc.exe	2.2.6	167936	04/24/07 13:31:36	12/10/09 14:56:55	c:\usr\tyx\bin\atdfc.exe
colb.dll	N/A	442368	04/24/07 13:31:34	12/10/09 14:56:57	c:\usr\tyx\bin\colb.dll
1488Inf.dll	1.37.14.3	47616	12/03/09 12:19:06	12/10/09 14:56:57	c:\usr\tyx\bin\1488Inf.dll
paws.exe	1.37.17	2524160	12/22/09 15:11:27	12/10/09 14:56:58	c:\usr\tyx\bin\paws.exe
pawsInfo.exe	1.37.17.3	607344	12/22/09 15:12:14	12/10/09 14:56:58	c:\usr\tyx\bin\pawsInfo.exe
Tdgviewer.exe	1.37.17.3	1124864	12/22/09 15:01:19	12/10/09 14:57:00	c:\usr\tyx\bin\Tdgviewer.exe
td_explorer.exe	1.37.17.3	832512	12/22/09 15:11:58	12/10/09 14:57:00	c:\usr\tyx\bin\td_explorer.exe
TYX.Tra.CastPdPreprocessor.dll	1.0.5.0	406600	12/08/09 10:47:22	12/10/09 14:57:01	c:\usr\tyx\bin\TYX.Tra.CastPdPreprocessor.dll
TYX.Tra.TRAO.dll	1.0.4.0	143360	12/08/09 10:47:08	12/10/09 14:57:01	c:\usr\tyx\bin\TYX.Tra.TRAO.dll
TYX.Tra.Tra_Sdk.dll	1.0.3.2	16394	12/08/09 10:47:19	12/10/09 14:57:01	c:\usr\tyx\bin\TYX.Tra.Tra_Sdk.dll
VISAInf.dll	1.37.14.3	43008	12/03/09 12:24:30	12/10/09 14:57:01	c:\usr\tyx\bin\VISAInf.dll
VCIInf.dll	1.37.14.3	43520	12/03/09 12:20:04	12/10/09 14:57:01	c:\usr\tyx\bin\VCIInf.dll
verts.exe	1.37.17	1764252	12/22/09 15:04:27	12/10/09 14:57:01	c:\usr\tyx\bin\verts.exe
vnf.exe	1.37.17	201216	12/22/09 15:11:35	12/10/09 14:57:01	c:\usr\tyx\bin\vnf.exe
[ATMLSchema]	N/A	FOLDER	12/22/09 16:19:35	12/22/09 16:19:35	c:\usr\tyx\bin\ATMLSchema



### 1.3.3 New Configure Registry application

This is a new console application distributed with this release. It is used to transparently transfer existing personalized user settings of PAWS and WRTS from older version to the Windows Registry. Alternately, users may use this command line application for viewing\transforming existing Paws Studio Suite applications settings.

Options:

- [default]** Updates Windows Registry with personalized settings of Paws Studio Suite applications from INI files.
- toXML** Transfers contents of Paws Studio Suite applications settings from the Windows registry to an XML file provided as an argument to the command line.
- fromXML** Transfers contents of Paws Studio Suite applications settings from an XML file provided as an argument to the command line to the Windows registry.

## 1.4 Problem Reports

## 2 Run Time System



Version 1.38.0

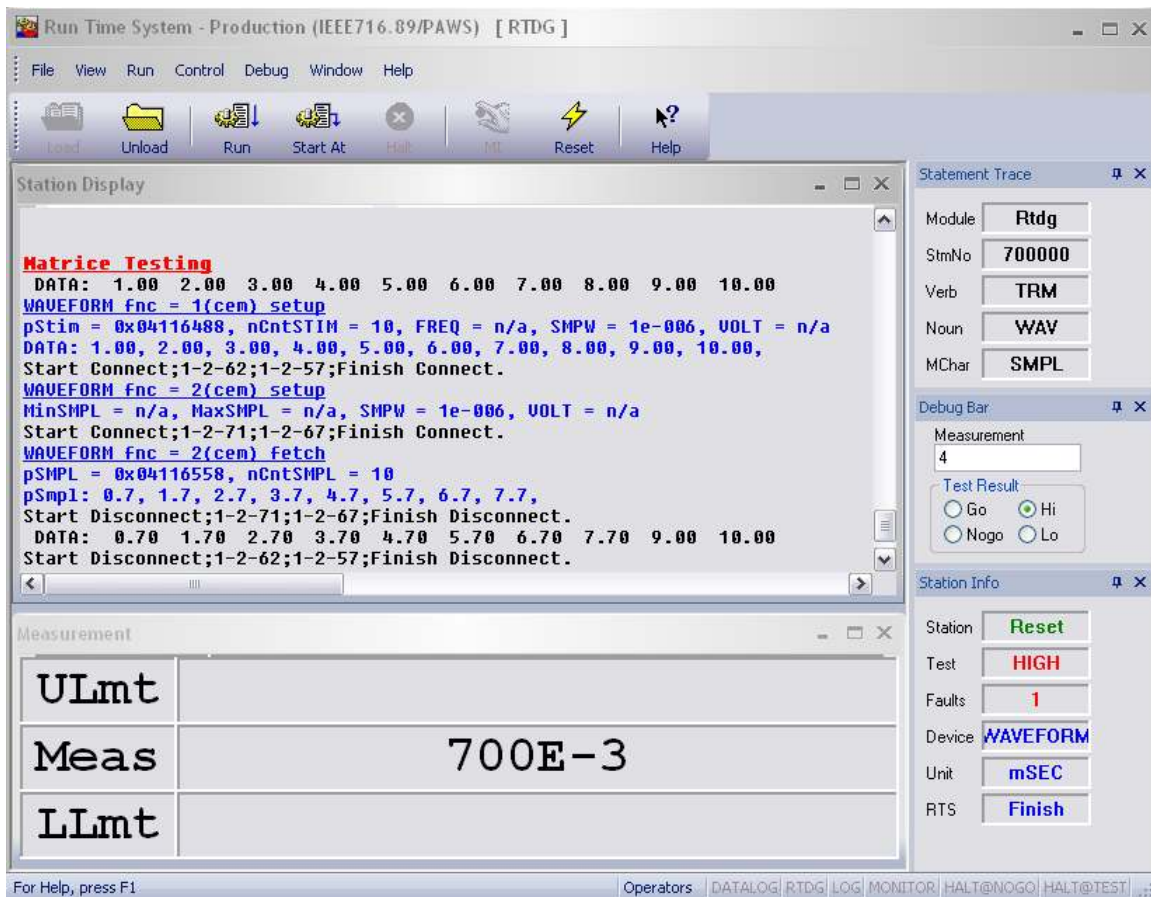
Release date: May 20, 2010

### 2.1 Critical Items

### 2.2 Known Limitations

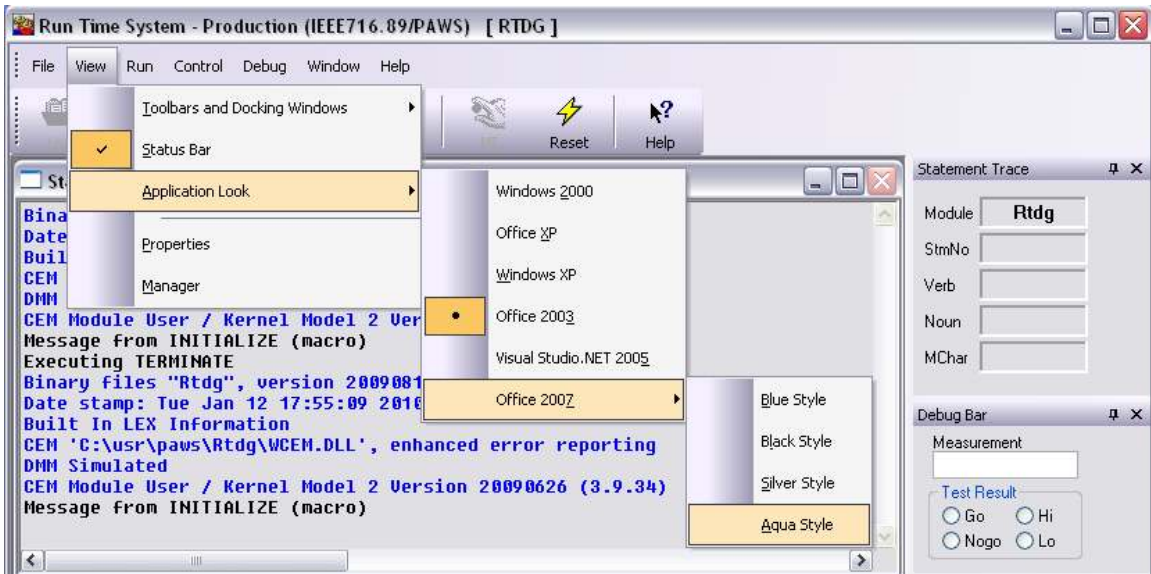
### 2.3 Enhancements

#### 2.3.1 WRTS Look & Feel update

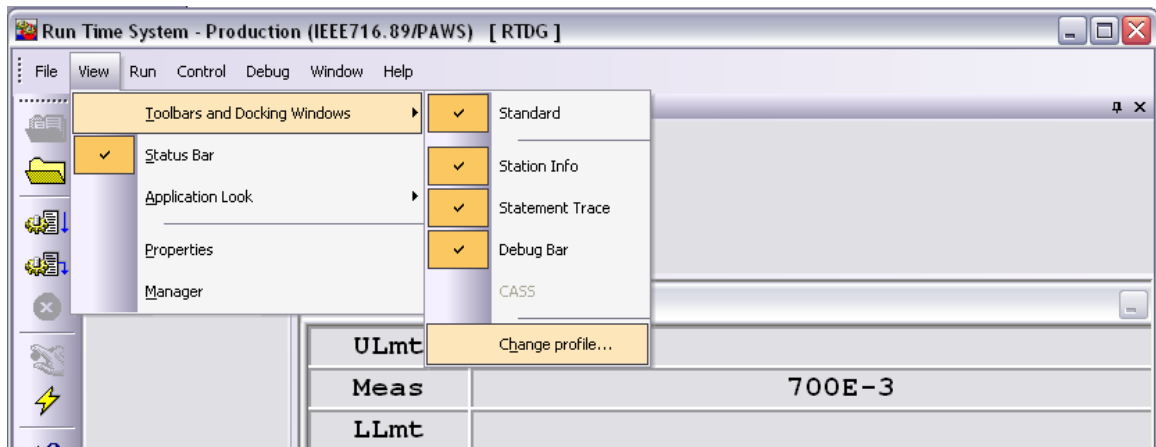


- Configurable application look, using Menu option **View**→**Application Look**

User can select various Application Looks like Windows 2000, Office XP, Windows XP, Office 2003, Visual Studio .NET 2005 or Office 2007. Similar update is also available through the entire suite of Studio applications like PAWS Developer Studio, TD Explored, Runtime TDG Viewer and Paws Info.



- Better convenient ways of docking windows.
- Floating capability.
- Auto-hide/Hide capability, providing increased editor area.
- New Menu option **View**→**Toolbars and Docking Windows**, to allow for user customization of windows. Within this option users can also choose “**Change Profile**” which launches the TYX Customizer. For added convenience, “**Profile Properties**” and “**Profile Manager**” have been moved under the View menu. A similar change exists for the PAWS.



- Personalized user settings (per Windows OS user on same computer) for configuration of WRTS window layout, WRTS IO Subsystem configuration etc.

**Note:**

On initial launch of the new WRTS application, user’s configuration settings from the “WRTS.ini” file will be copied over to the windows registry. Thereafter, the WRTS application will not use “WRTS.ini” file for user settings, it will use the Windows Registry instead. Alternately, users can also work with “**Configure Registry**” is also a new application provided to the user to assist in transferring configuration settings. See more details under “**New Configure Registry application**”

## 2.4 Problem Reports

### 2.4.1 PR 10026 MAX-TIME control from CEM fails

This error rose in the RTS released with 1.37.17 only. Each use of

```
ErrMsgBits(EB_SET_MAXTIME, "")
```

or

```
ErrMsg(9, "")
```

in CEM had our RTS issue the “Variant Typecast Error” message as warning. This problem has been fixed in this version.

## 3 PAWS1641 station



Version 1.38.0

Release date: May 20, 2010

### 3.1 Enhancements

#### 3.1.1 1641BSCConfig.XML file changed

The change of this file resolved the confusion between the type attribute (type='Voltage' or type='Time') of any BSC or TSF Model as it is defined by the 1641 Standard and the pseudo-type (type='msb-first' or type='lsb-first') needed by the atlas statement regarding a serial transmission.

The user must update this file in all 1641 oriented stations.

#### 3.1.2 PHYSICAL-NOMINAL and DECIMAL-NOMINAL are declared as new modifiers

These modifiers are used in the translation into atlas of the following carrier language + TPL class:

```
class C
{
    public void main()
    {
        <TPL>
        Setup
        <Signal Out='i'>
            <TwoWire name='tw' hi='J1' lo='J2' channelWidth='1' />
            <Instantaneous name='i' In='tw' nominal='5 V' samples='1' />
        </Signal>
        as s1;
    </TPL>
    Console.WriteLine(1);
    }
}
```

These two modifiers are general to all nouns, and they must support all dimensions. The LEX source files that must be updated on all the 1641 oriented stations follow: *nounsmod*, *modifier*, and *modsdims*.