

TYX CORPORATION

Productivity Enhancement Systems



PAWS Studio Release Notes

Version 1.38.2
August 19, 2010

Table of contents

1	Paws Developer's Studio	3
1.1	Critical Items	3
1.2	Known Limitations	3
1.3	Enhancements	3
1.4	Problem Reports	3
2	Run Time System	4
2.1	Critical Items	4
2.2	Known Limitations	4
2.3	Enhancements	4
2.3.1	UNIX functionality for loaded projects changed	4
2.4	Problem Reports	5
2.4.1	PR10044 The PRINTER file content is reset when the C'\ESC[2J' string is output to printer	5

1 Paws Developer's Studio



Version 1.38.2

Release date: August 19, 2010

1.1 Critical Items

1.2 Known Limitations

1.3 Enhancements

1.4 Problem Reports

2 Run Time System



Version 1.38.2

Release date: August 19, 2010

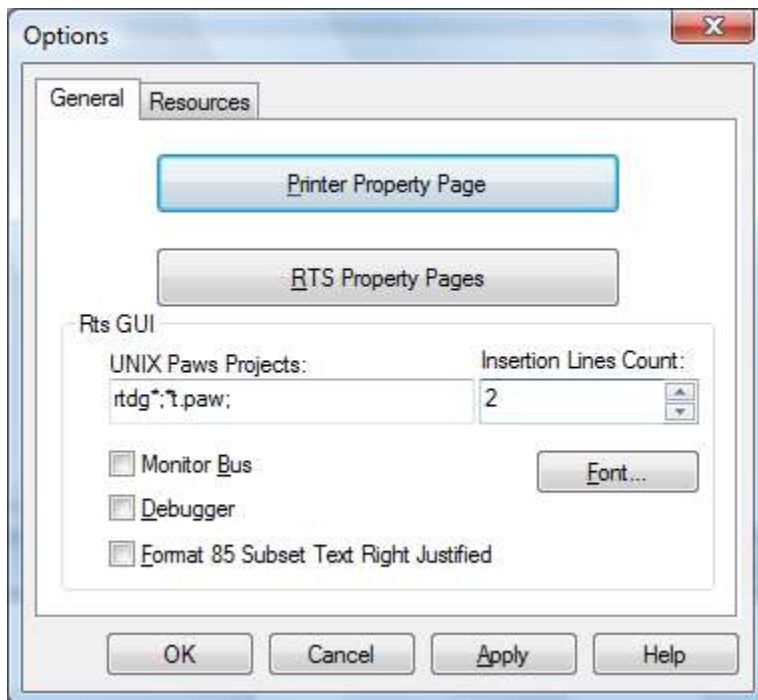
2.1 Critical Items

2.2 Known Limitations

2.3 Enhancements

2.3.1 UNIX functionality for loaded projects changed

When the *Control\Options* pull down menu entry is selected, the following property page is shown:

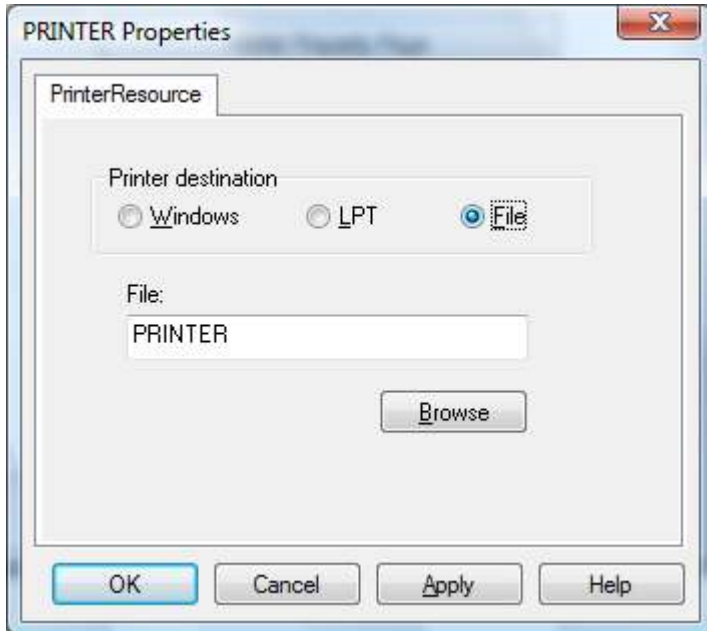
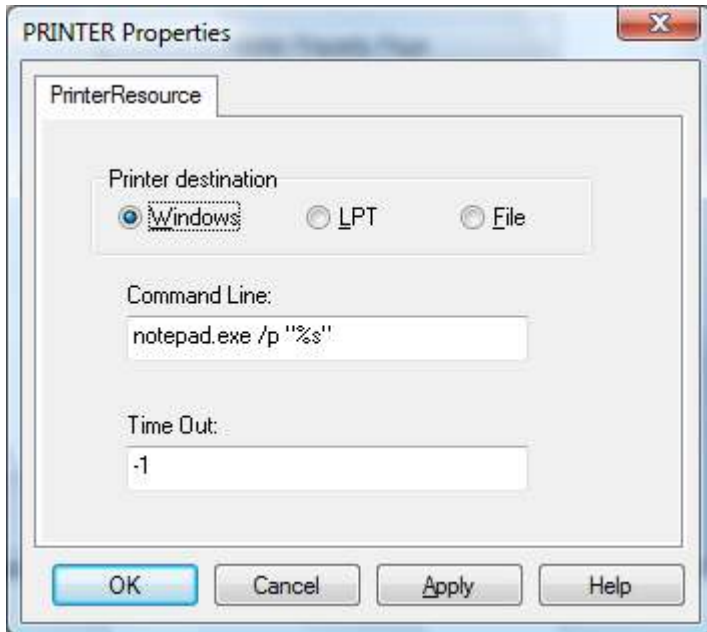


The *UNIX Paws Projects* and *Insertion Lines Count* controls are new. By default, *UNIX Paws Projects* is empty and the *Insertion Lines Count* is read-only, set up at zero. The functionality of the RTS is not changed in this context. When *UNIX Paws Projects* is not empty, the *Insertion Lines Count* control becomes writable. *UNIX Paws Projects* identifies the short file names of the paws projects for which the RTS inserts the *Insertion Lines Count* of empty lines in the Station Display, *after* each INPUT or MANUAL INTERVENTION. The UNIX project identification is based on the meaning of * as *any group of characters* in the short file names of the paws projects. In the picture above, the RTS considers UNIX projects the projects whose short file names start with *rtdg* or end with *t.paw*.

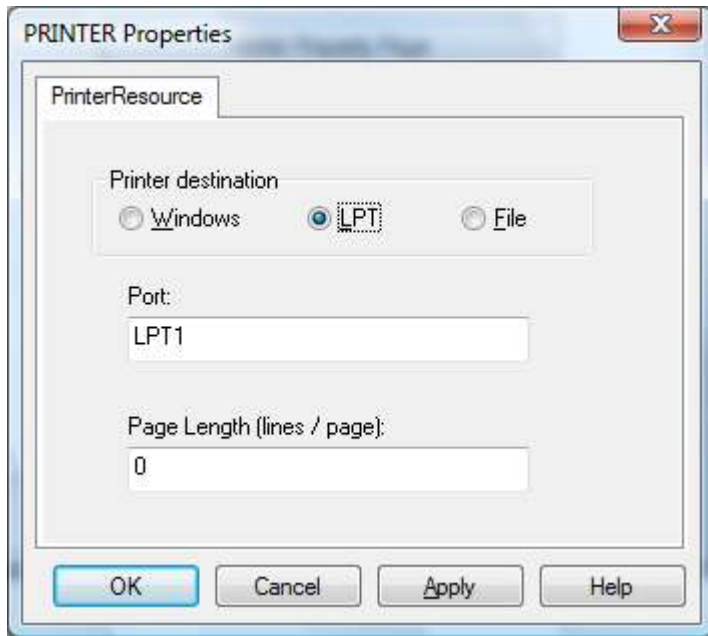
2.4 Problem Reports

2.4.1 PR10044 The PRINTER file content is reset when the C:\ESC\2J' string is output to printer

The ATLAS code has the ability of cleaning up the PRINTER file content, when the PRINTER is configured as Windows printer or a File printer. This is done through an OUTPUT TO PRINTER statement, where the \ESC\2J is output to the printer. The same escape sequence sent to the OUTPUT clears the content of the Station Display.



This feature does not have any effect on the PORT(LPT) printer.



In the IEEE716.89 subset, the atlas code that resets the printer file looks as follows.

```
000010 BEGIN, ATLAS PROGRAM 'ID' $
E100000 OUTPUT, TO 'PRINTER', C'LINE1' $
C reset the content of the PRINTER file $
      OUTPUT, TO 'PRINTER', C'\ESC\[2J'$
      OUTPUT, TO 'PRINTER', C'REPRINT LINE1' $
      OUTPUT, TO 'PRINTER', C'LINE1' $
999999 TERMINATE, ATLAS PROGRAM 'ID' $
```